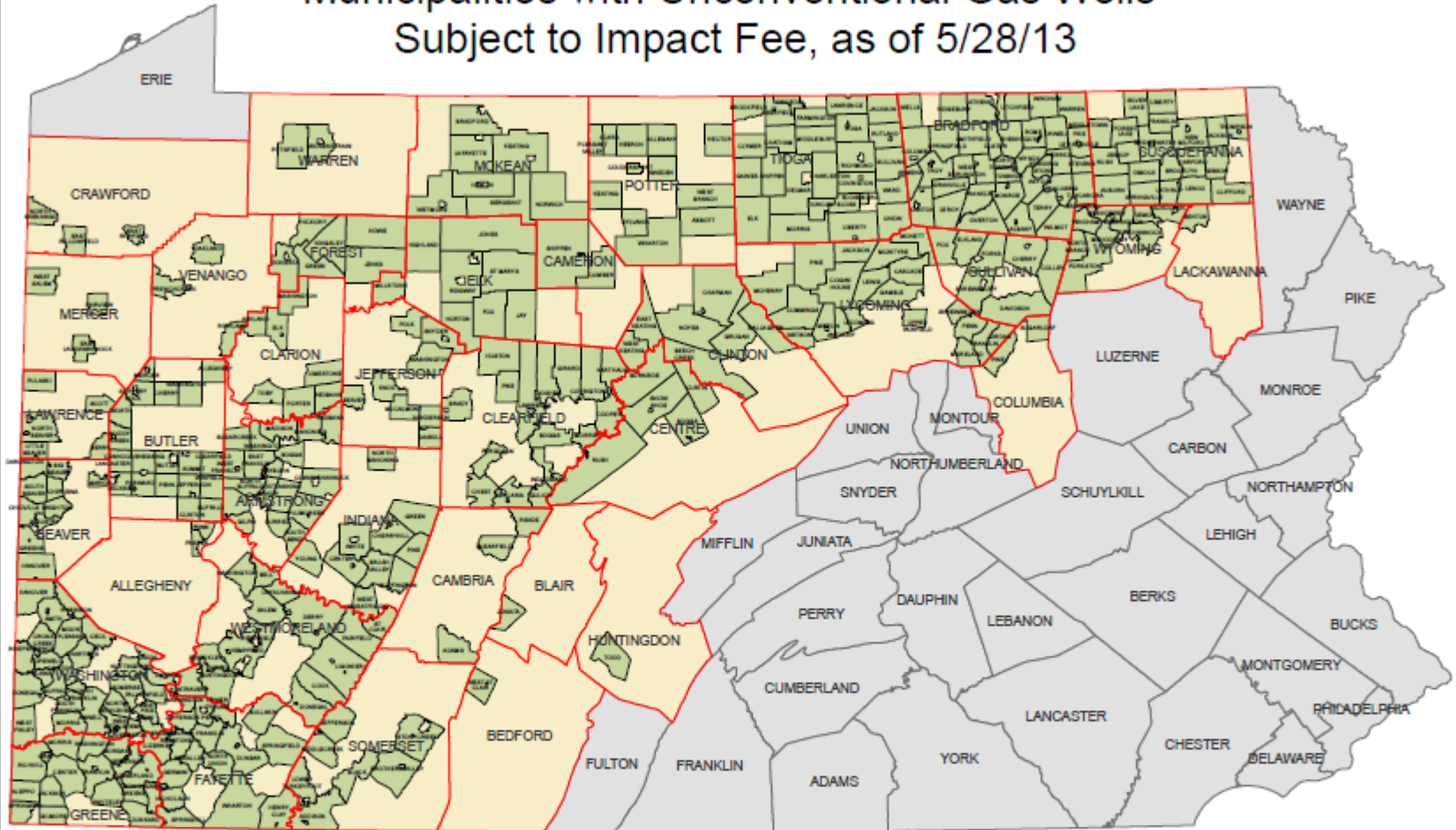


# Pennsylvania Marcellus Shale Development

NH&RA /NCHMA National Conference  
October 24, 2013

Bryce Maretzki, Pennsylvania Housing  
Finance Agency

# Municipalities with Unconventional Gas Wells Subject to Impact Fee, as of 5/28/13



# State Housing Trust Fund

## Pennsylvania Housing Affordability and Rehabilitation Enhancement (PHARE) Fund

- Act 105, 2010
- No funding stream
- Requires at least 30% of funds for households below 50% of median area income
- Wide range of housing activities
- Annual plan and reporting

# PA Marcellus Shale

## Marcellus Shale Impact Fee

- Act 13, 2012
- Fee assessed on wells and production
- To address “impacts” from drilling
- \$204 Million in 2013 (\$204 Million in 2012)
- \$8.7 Million for PHARE (Housing)
  - \$5.0 Million in “base”
  - \$3.7 Million in “surplus”
  - At least 50% to “rural” counties

# Impact

- 59 projects funded (78 applied)
- \$16.7 Million awarded (\$32M requested)
- \$160 Million in leveraged funds
- 484 new rental units produced
- 42 new single family homes
- 490 households to rehab, repair homes
- 518 households receiving rental assistance
- 272 homes for future development (acq/demo)

# Principles of Investment

- Maximize resource leveraging
- Address greatest need
- Foster partnerships
- Effective and efficient
- Equitable and Transparent
- Comprehensive Approach

# Next Steps?

- Planning – for the long term
- Build capacity in rural areas
- On-going support
- Strategic funding
- Sustained economic impact
- Expanded industry diversification
- Greater partnership with counties
- Changes in gas economics and impact

# Contact Information

Bryce Maretzki

Pennsylvania Housing Finance Agency (PHFA)

211 North Front Street

Harrisburg, PA 17101

Phone: (717) 780-1867

Email: [bmaretzki@phfa.org](mailto:bmaretzki@phfa.org)